

16

Glsp

Timpani

Piano I

Piano II

40

Glsp

Timpani

Piano I

Piano II

poco rall...
mp

Gisp

Timpani

piano I

piano II

III - Intermezzo

1 Lirico ($\text{♩} = 48$)

piano I

piano II

18

Piano I

mp *mf* *crescendo* *f* *p subito*

Piano II

mp *mf* *crescendo* *f* *p subito*

Piano I

p

Piano II

p

19

Piano I

p *mp* *p poco rall...*

Piano II

p *mp* *poco rall...*

Molto appassionato
(e'istesso tempo)

mp cantabile

The first system of the handwritten musical score consists of two staves, labeled 'piano I' and 'piano II'. Both staves are in treble clef and contain complex musical notation. The key signature has two sharps (F# and C#), and the time signature is 4/4. The tempo and mood are indicated as 'Molto appassionato (e'istesso tempo)'. The first staff begins with a dynamic marking of *mp cantabile*. The notation includes numerous slurs, triplets, and accents. The second staff also features similar complex notation with triplets and slurs. The system concludes with a double bar line.

The second system continues the musical score with two staves, 'piano I' and 'piano II'. The notation is dense with slurs and triplets. Dynamic markings include *mp* and *mf*. The key signature remains two sharps. The system ends with a double bar line.

The third system of the handwritten musical score consists of two staves, 'piano I' and 'piano II'. The notation continues with complex rhythmic patterns, including triplets and slurs. Dynamic markings such as *mf* and *mp* are present. The key signature is consistent with the previous systems. The system concludes with a double bar line.

(20)

Piano I

Piano II

Piano I

Piano II

dimin.

Piano I

Piano II

Piano I

Piano II

P sub.

mf

21

Piano I

Piano II

p

mp

rallentando

Lirico

A tempo

Piano I

Piano II

30

2/4

22

Piano I

Piano II

Piano I

Piano II

cresc. ed affrettando f

mf A tempo

rubato

cresc. ed affrettando

f rubato

A tempo

Piano I

Piano II

40

8a...

8^a-----

Poco Meno cantabile (23)

iano I
pp 8^a ab...
P
mp
4/4
6/4

iano II
P
pp
7 7
4/4
6/4

iano I
P
m.d. P
m.e.
4/4

iano II
mp
P
8^a-----

4/4
8^a ab...
P

iano I
pp

#

iano II
poco rall...
m.d. 8^a-----

m.e.
pp

#

IV - Finale

1 Con vigore (♩=180)

xyle

vib

Piano I

Piano II

hard mallets (all the time)

f

8va

8va ab

xyle

vib

Piano I

Piano II

mf

Handwritten musical score for the first system, featuring Xylophone (xyle), Vibraphone (vib), and two Piano (piano I and II) parts. The score includes dynamic markings such as *f*, *mf*, and *b*, along with various musical notations like slurs, accents, and complex chord structures. The piano parts feature intricate rhythmic patterns and melodic lines.

Handwritten musical score for the second system, continuing the piano parts (piano I and II). This section includes the instruction *crescendo* written in both parts, indicating a gradual increase in volume. The notation includes slurs, accents, and complex chord structures.

26

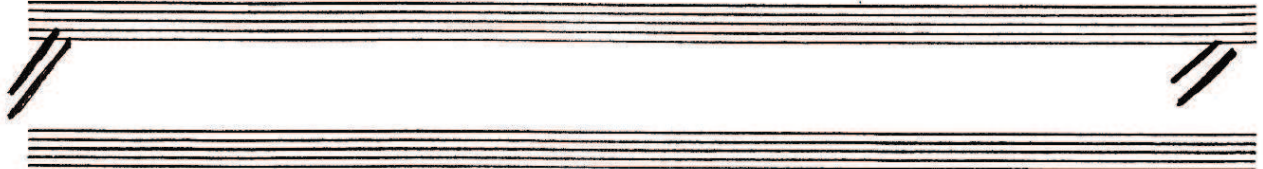
xyk

vib

Piano I

Piano II

Handwritten musical score for measures 26-27. The score includes staves for xylophone (xyk), vibraphone (vib), Piano I, and Piano II. Dynamics range from *ff* to *mf*. The key signature is B-flat major. Measure 27 includes the instruction *mf (più leggero)*. A circled number 10 is written above the xylophone staff in measure 27.



xyk

vib

Piano I

Piano II

Handwritten musical score for measures 28-30. The score includes staves for xylophone (xyk), vibraphone (vib), Piano I, and Piano II. Dynamics range from *mf* to *ff*. The key signature is B-flat major. Measure 28 includes the instruction *mf*. Measure 29 includes the instruction *ff*. Measure 30 includes the instruction *ff*. A circled number 11 is written above the xylophone staff in measure 28. The score includes various musical notations such as slurs, accents, and dynamic markings.

Handwritten musical score for the first system, featuring five staves:

- xyle**: Treble clef, melodic line with various accidentals and dynamics.
- vib**: Treble clef, melodic line with dynamics including *mf*.
- piano I**: Grand staff (treble and bass clefs), complex accompaniment with *crescendo* marking.
- piano II**: Grand staff, accompaniment with *8va* marking and various dynamics.
- Bottom staves: Empty staves with double slash break marks.

Handwritten musical score for the second system, featuring five staves:

- xyle**: Treble clef, mostly rests.
- vib**: Treble clef, melodic line with dynamics including *f*.
- piano I**: Grand staff, accompaniment with dynamics including *f*, *mf*, and *mp*.
- piano II**: Grand staff, accompaniment with dynamics including *f* and *mp*.

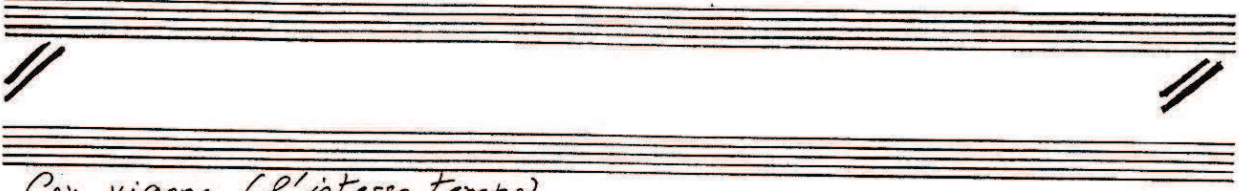
28

20 Dolce (l'istesso tempo)

Handwritten musical score for the first system, measures 28-30. The score includes staves for Xyle, Vib, Piano I, and Piano II. The tempo is marked *Dolce (l'istesso tempo)*. The first two measures are marked *poco rall...*. The third measure is marked *cantabile*. Dynamics include *mp*, *p*, and *mf*. The score features various musical notations such as slurs, accents, and articulation marks. A double bar line with repeat slashes is at the end of the system.

Handwritten musical score for the second system, measures 31-34. The score includes staves for Xyle, Vib, Piano I, and Piano II. The tempo is marked *(B = B)*. The score features various musical notations such as slurs, accents, and articulation marks. Dynamics include *f*.

Handwritten musical score for the first system, featuring Xylophone (xyle), Vibraphone (vib), and Piano (piano I and II). The score includes treble and bass clefs, notes, rests, and dynamic markings such as *mf*. The piano parts feature complex rhythmic patterns with many beamed notes and some plus signs (+) indicating specific notes.



Con vigore (e'istesso tempo)

Handwritten musical score for the second system, featuring Xylophone (xyle), Vibraphone (vib), Piano (piano I), and Harp (arbo). The score includes treble and bass clefs, notes, rests, and dynamic markings such as *mp*. The harp part features a melodic line with many beamed notes and accents. The piano parts have simpler accompaniment.

30

xyle *mf* *p*

vib *mf* *p*

Piano I *mf* *p*

Piano II *mf* *p*

30

xyle *mf*

vib *mp*

Piano I *mf* *mp* *mf*

Piano II *mp* *mf*

Handwritten musical score for the first system, featuring Xylophone (xyle), Vibraphone (vib), and two Piano parts (Piano I and Piano II). The score is written in treble clef with a key signature of one flat (B-flat) and a time signature of 4/4. The Xylophone part starts with a *mf* dynamic. The Vibraphone part starts with a *mp* dynamic. The Piano I part starts with a *mf* dynamic. The Piano II part starts with a *mf* dynamic. The score includes various musical notations such as notes, rests, and dynamic markings.

Handwritten musical score for the second system, continuing the Xylophone (xyle), Vibraphone (vib), and two Piano parts (Piano I and Piano II). The Xylophone part has a *mp* dynamic and includes the instruction *rallentando*. The Vibraphone part has a *mp* dynamic. The Piano I part has a *dimin. e rallent.* instruction and a *p* dynamic. The Piano II part has a *dimin. e rallent.* instruction and a *p* dynamic. The score includes various musical notations such as notes, rests, and dynamic markings.

32

Solenne (♩ = 52)

Handwritten musical score for measures 32-39. The score includes staves for tubular bells, maracas, piano I, and piano II. The key signature is one sharp (F#) and the time signature is 4/4. Dynamics include *mp* and *f*. There are handwritten annotations such as "3/4" and "3/4" above the first two measures, and "mp" and "f" markings. A double bar line with repeat slashes is present at the end of the system.

40

Handwritten musical score for measures 40-43. The score includes staves for tubular bells, maracas, piano I, and piano II. The key signature changes to two flats (Bb, Eb) and the time signature changes to 2/4. Dynamics include *mf* and *crescendo*. There are handwritten annotations such as "2/4" and "2/4" above the last two measures, and "crescendo" markings. A double bar line with repeat slashes is present at the end of the system.

Festivo (l'istesso tempo)

Handwritten musical score for the first system, measures 1-2. The score includes staves for Bells, Piano, and two parts of the Piano (I and II). The key signature is one sharp (F#) and the time signature is 2/4. Dynamics include *mf* and *f*. The piano part II features a dense sixteenth-note texture.

Handwritten musical score for the second system, measures 3-4. The score includes staves for Bells, Piano, and two parts of the Piano (I and II). The key signature changes to two sharps (F# and C#). A measure rest of 84 is indicated above the piano I staff. Dynamics include *f*. The piano part II continues with a sixteenth-note texture.

34

Tubular Bells

Timpani

Piano I

Piano II

50

Tubular Bells

Timpani

Piano I

Piano II

Handwritten musical score for percussion instruments. The score includes staves for:

- Whip (labeled 'ship')
- Timpani (labeled 'mpani')
- Drum I (labeled 'drum I')
- Drum II (labeled 'drum II')

The score features various dynamic markings such as *ff* (fortissimo) and *ff* with accents (>). A box labeled 'vib' is present above the Whip staff. There are also handwritten notes like '8a...7' and '8a-ab-1'. The score concludes with the signature 'P. L. L. L.' and the text 'P. L. L. L.' written vertically.

Brahmshaus Studio, Baden-Baden,
 November / 2003
 Rio de Janeiro, April / 2004

PERCUSSION

<u>Instruments</u>	<u>Abbreviature</u>	
xylophone	xyle	} 2 PERFORMERS
vibraphone	vib	
Glockenspieler	Glock	
Tubular Bells	Tubular Bells	
Timpani (4)	Timpani	
Whip	Whip	

REFERENCES TO JOHANNES BRAHMS' WORKS

Piano Concerto n° 2 (1st movement); Symphony n° 4 (2nd movement);
 Intermezzo Op. 118 n° 2 (A Major); Piano Concerto n° 2 (2nd movement);
 Symphony n° 2 (4th movement); Symphony n° 1 (4th movement)